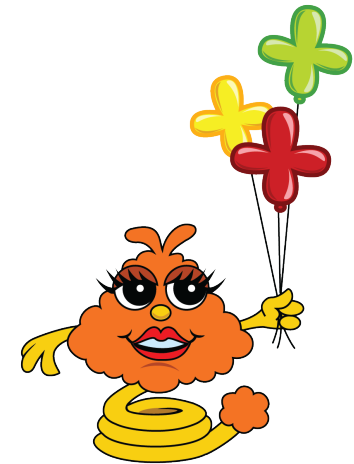


# Differences Between Numbers



## Directions:

1. Use the open number line to solve.
2. Show each jump you make and the number you land on.
3. Add the jumps to find the answer.

$$680 + \underline{\hspace{2cm}} = 900$$

$$210 + \underline{\hspace{2cm}} = 400$$

$$600 - 440 = \underline{\hspace{2cm}}$$

$$830 - 500 = \underline{\hspace{2cm}}$$