

Solve with Springling



$$600 - 476 =$$

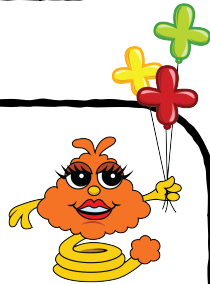


Solve with Minni & Subbi

$$600 - 476 =$$



$$700 - 428 =$$



$$700 - 428 =$$

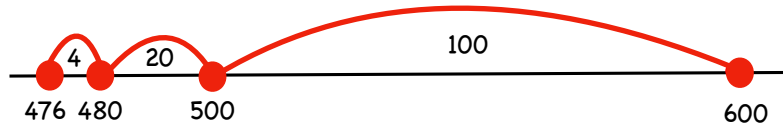


Answer Key

Solve with Springling



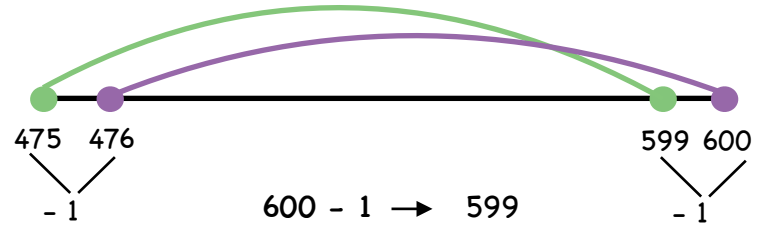
$$600 - 476 =$$



$$100 + 20 + 4 = 124$$

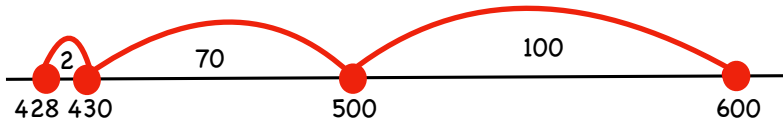
Solve with Minni & Subbi

$$600 - 476 =$$



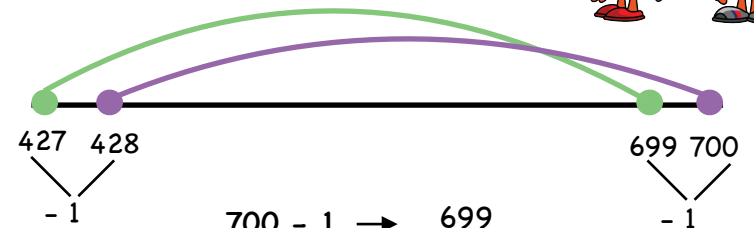
$$\begin{array}{r} 600 - 1 \rightarrow 599 \\ 476 - 1 \rightarrow -475 \\ \hline 124 \end{array}$$

$$700 - 428 =$$



$$100 + 70 + 2 = 172$$

$$700 - 428 =$$



$$\begin{array}{r} 700 - 1 \rightarrow 699 \\ 428 - 1 \rightarrow -427 \\ \hline 272 \end{array}$$